

Emma Shipley

MYTHICA



Emma Shipley

MYTHICA

**Travel to a fantastical parallel universe with Mythica,
a collection by artist Emma J Shipley.**

From the Scottish highlands to the Grecian temples of Emma's unbridled imagination, everything in the world of Mythica is beautiful, whimsical, surreal, and never quite what it seems. Mythica is a vibrant and fantastical collection where bold and expressive design meets the far reaches of literary imagination, for an immersive collection of fabrics, wallpapers and exclusive mural designs.

Step inside the world of these intricate hand-drawn illustrations, plunge into the water's depths, and find a world of swaying coral, anemones and sting rays before rising to the surface to the Costa Rican cloud rainforests with resplendent quetzals, hummingbirds, and beyond.

"My love for wildlife is at the heart of each design for Mythica. This collection brings in my influences and experiences travelling to some of the most biodiverse places on earth, like the Osa Peninsula in Costa Rica, which have been alchemized to create this collection that goes further into myth and fantasy than ever before."

Emma J Shipley.

This wallpaper and fabric collection features bold new colour palettes, as well as jacquard weaves and embroideries for the first time. Each design of Mythica, whether translated on beautifully textured wallpaper, rich velvet or fresh cottons, will transform spaces with magic and wonder.

Created in partnership with Clarke & Clarke.

clarke-clarke.sandersondesigngroup.com

[@clarke_clarke_interiors](https://www.instagram.com/clarke_clarke_interiors)

BOSQUE DREAMS VELVET

Enter a jungle dreamscape inspired by Emma J Shipley's travels in the Osa Peninsula in Costa Rica, one of the most biodiverse places on Earth. An enigmatic puma stands centre-stage, surrounded by other fantastical creatures of the forest, including macaws, monkeys, sloths, and ocelots. Printed on a beautifully soft cotton velvet, this Bosque Dreams fabric can work across an array of interior projects, from upholstery to curtains, cushions, and more.



BOSQUE DREAMS VELVET
F1749/01



BOSQUE DREAMS VELVET
F1749/03



BOSQUE DREAMS
W0213/04



[Click on the product images to discover more.](#)

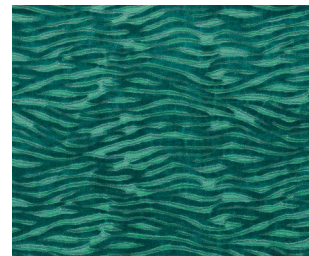


BOSQUE DREAMS JACQUARD

This jungle dreamscape, inspired by Emma J Shipley's travels in the Osa Peninsula in Costa Rica, one of the most biodiverse places on Earth, takes a bold turn as a jacquard in the collection. An enigmatic puma stands centre-stage, surrounded by other fantastical creatures of the forest, including macaws, monkeys, sloths, ocelots and more. Created as a wildly intricate jacquard weave in a toile style, Bosque Dreams is set on a cream ground in two impactful colourways. The design is woven on a larger scale than the print fabric, highlighting the texture and depth unique to Jacquard.



BOSQUE DREAMS
W0213/02



WILDSTRIPE
F1762/03



BOSQUE DREAMS
F1750/02

[Click on the product images to discover more.](#)

LOST ADVENTURE MURAL

Discover a lost adventure in this wallpaper mural, inspired by the adventurous tales of Jules Verne and the captivating wildlife of Africa. With Emma J Shipley's hand-drawn curious peacock-tailed zebras, winding foliage, towering mountains and mighty dinosaurs in the distance, there's a whole world to explore within this intricate design, set against subtle rose quartz and smoky midnight grounds.



QUETZAL VELVET
F1759/02



PARADISE LOST
VELVET F1757/01



LOST ADVENTURE
MURAL W0201/02



[Click on the product images to discover more.](#)



HIGHLAND WONDER MURAL

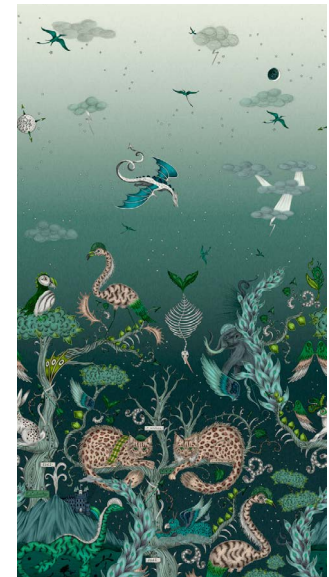
Go on a magical trip to the Scottish Highlands with this wallpaper mural. Inspired by tales of the Loch Ness monster, prehistoric creatures and fantastical stories, this design will transport you to a realm of magic and wonder. The surreal scene comprises two of Emma J Shipley's bestselling designs, Highlandia and Wonder World, to create something altogether new and beguiling in a mural piece.



HIGHLANDIA VELVET
F1752/03



WONDER WORLD
VELVET F1764/02

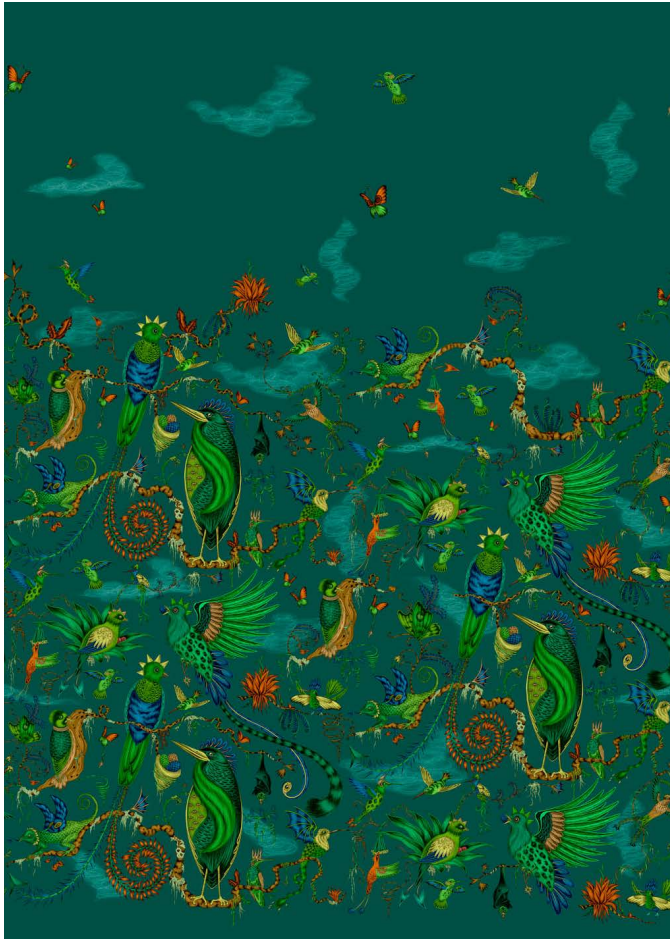


HIGHLAND WONDER
MURAL W0202/01

[Click on the product images to discover more.](#)

CLOUD FOREST MURAL

Embark on a journey to the enchanted cloud forest, inspired by the resplendent quetzal bird and the flora and fauna found in the Costa Rican cloud forest. These elusive creatures are surrounded by other enchanting wildlife, such as hummingbirds, bats, lizards, and a tiger heron, all perched upon the vines and moss of the forest in Emma J Shipley's imagined world. In mural form, these creatures are all the more magnificent.



CLOUD FOREST MURAL

W0200/02



[Click on the product images to discover more.](#)



CLOUD FOREST MURAL

Embark on a journey to the enchanted cloud forest, inspired by the resplendent quetzal bird and the flora and fauna found in the Costa Rican cloud forest. These elusive creatures are surrounded by other enchanting wildlife, such as hummingbirds, bats, lizards, and a tiger heron, all perched upon the vines and moss of the forest in Emma J Shipley's imagined world. In mural form, these creatures are all the more magnificent.



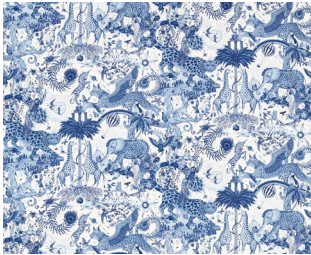
CLOUD FOREST MURAL

W0200/01

[Click on the product images to discover more.](#)

PARADISE LOST

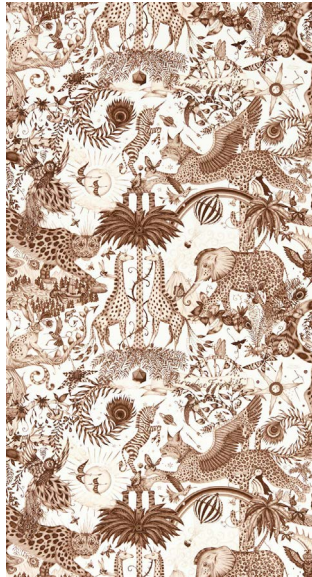
Escape to unknown lands with the magical Paradise Lost design. Inspired by myths, legends, fairytales, and the unique beauty of the natural world, this fantastical design features a menagerie of Emma J Shipley's best-loved illustrations. Made with 100% cotton in three colourways, Paradise Lost has a touch of the Toile de Jouy influence but is utterly transformed by depicting these otherworldly, whimsical realms.



PARADISE LOST
F1756/03



PARADISE LOST
F1756/01



PARADISE LOST
W0216/04



[Click on the product images to discover more.](#)



SEAFORREST

Emma J Shipley was inspired by the 19th-century antique botanical drawings of zoologist Ernst Haeckel and the novel *20,000 Leagues Under the Sea* by Jules Verne for this design. Seaforest invites you to escape into a fantastical new world beneath the water's surface. Discover a flurry of stingrays, shoals of fish, and gently wafting coral. See mythical sea horses that happily careen on by or anemones that gently sway through a scene that invites you to dream. This beautiful hand-drawn illustration comes to life in fabric; the ground colours allow the detailed drawing to pop and twist through the design. While the Blue and Mono colourways retain their illustrative edge, Seaforest in Aqua becomes 'of the sea' in the fabric's movement and tones.



SEAFORREST
F1760/02



ALVAR INDIGO
F0753/06



SEAFORREST
W0218/02

[Click on the product images to discover more.](#)

HIGHLANDIA

Dragons fly through a starry sky and twist their tails. Spot the Loch Ness monster, a winged griffin, or even a mammoth. Bows and arrows fly overhead, lightning strikes, flames swirl, clouds gather, and a Scottish turreted castle appears in the distance. These are just some of the enchanting details of Emma J Shipley's Highlandia design, which emerges in glorious form in this digitally printed wallpaper. Imaginative and evocative, a fantastical Scottish land appears—perfect for bold interiors.



ODYSSEY MYTHOS
JACQUARD F1754/01



BOSQUE DREAMS
VELVET F1749/03



HIGHLANDIA
W0214/02



[Click on the product images to discover more.](#)

FABRIC



BOSQUE DREAMS
F1748/01



BOSQUE DREAMS
VELVET F1749/01



BOSQUE DREAMS
VELVET F1749/02



BOSQUE DREAMS
VELVET F1749/03



BOSQUE DREAMS
VELVET F1749/04



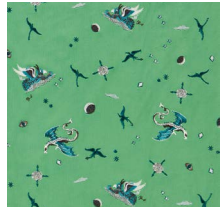
BOSQUE DREAMS
VELVET F1749/05



BOSQUE DREAMS
JACQUARD F1750/01



BOSQUE DREAMS
JACQUARD F1750/02



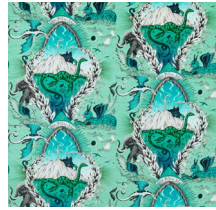
DRACO COSMOS
EMBROIDERY F1751/01



HIGHLANDIA
VELVET F1752/01



HIGHLANDIA
VELVET F1752/02



HIGHLANDIA
VELVET F1752/03



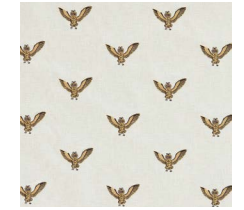
ODYSSEY MYTHOS
VELVET F1753/01



ODYSSEY MYTHOS
VELVET F1753/02



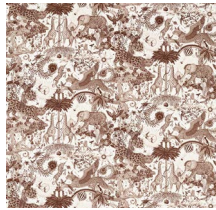
ODYSSEY MYTHOS
JACQUARD F1754/01



OWL OF ATHENA
EMBROIDERY F1755/01



PARADISE LOST
F1756/01



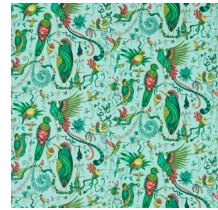
PARADISE LOST
F1756/01



PARADISE LOST
F1756/02



PARADISE LOST
VELVET F1757/01



QUETZAL
F1758/01



QUETZAL
F1758/02



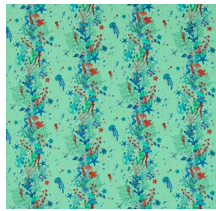
QUETZAL
VELVET F1759/01



QUETZAL
VELVET F1759/02



QUETZAL
VELVET F1759/03



SEAFOREST
F1760/01



SEAFOREST
F1760/02



SEAFOREST
F1760/03



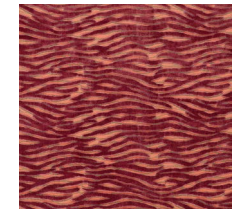
SEAFOREST
JACQUARD F1761/01



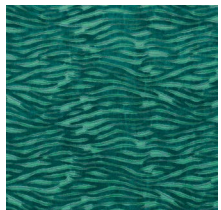
SEAFOREST
JACQUARD F1761/02



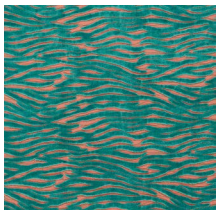
WILDSTRIPE
F1762/01



WILDSTRIPE
F1762/02



WILDSTRIPE
F1762/03



WILDSTRIPE
F1762/04



WONDER WORLD
F1763/01



WONDER WORLD
VELVET F1764/01



WONDER WORLD
VELVET F1764/02

WALLPAPER MURALS



CLOUD FOREST
MURAL W0200/01



CLOUD FOREST
MURAL W0200/02



LOST ADVENTURE
MURAL W0201/01



LOST ADVENTURE
MURAL W0201/02



HIGHLAND WONDER
MURAL W0202/01



Click on the product images to discover more.



CONTACT DETAILS

LONDON SHOWROOM - NEW

Sanderson Design Group
Unit 23G, Ground Floor, Central Dome,
Chelsea Harbour Design Centre
SW10 0XE, London

NEW YORK SHOWROOM

D&D Building, 979 Third Avenue,
Suite 905, New York, NY10022
+1 212 319 7220
sales-ny@sandersondesigngroup.com

CHICAGO SHOWROOM

222 W Merchandise Mart Plaza,
Suite 6-117A, Chicago, IL, 60654
+1 312 929 2058
sales-chicago@sandersondesigngroup.com

GERMANY SHOWROOM

Kronenstrasse 4, 76133 Karlsruhe
+49 721 981 985 60
verkauf@sandersondesigngroup.com

NETHERLANDS SHOWROOM

ETC Licht & Interieur, Randweg 20,
4104 AC Culemborg
+31 65349 3696
international@sandersondesigngroup.com

ABOUT CLARKE & CLARKE

Founded in 2009 as the go-to design house defining transitional style in home interiors, Clarke & Clarke offers an eclectic yet distinctive collection of fabrics, wallpapers and home accessories. Born out of a passion for creating beautiful, expressive homes, Clarke & Clarke's spirit and British flair deliver an inclusive sense of glamour for the style conscious. Focusing on luxurious textures and bold colour combinations, Clarke & Clarke's aesthetic runs from whimsical to glamorous and maximalist to sleek, for polished looks embodying British eclecticism.

