



SEKERS

LUNAR (3 PASS FR BLACKOUT)

FIRE RESISTANCE

Curtains:	BS 5867: Part 2 Type B B1
IMO:	IMO FTPC Part 7 (Curtains)
USA:	NFPA 701
Colour Match:	Colour may vary from one batch to another. If an exact match is required, please ask for a stock cutting.
Composition: Width:	100% Polyester
Weight:	300 cm 335 g/m ²
Usage:	Reversible Blackout Contract Curtains
Cleaning:	
Delivery	Fabric will be delivered folded half width on roll
Additional Information	Lunar features sound absorption properties.
Important information:	This is a reversible two-toned fabric. Both sides of the fabric can be used as the face. It is the designer's responsibility to confirm with the curtain manufacturer which colour should be used as the face.

SEKERS

LUNAR

2 COLOUR REVERSIBLE BLACKOUT



ALL SALES AND EXPORT ENQUIRIES TO:
 Sekers Fabrics Limited
 7a Nobel Road, Wester Gourdie Industrial Estate
 Dundee, DD2 4UH
 Sales Tel: +44 (0) 1946 517501
UK & Ireland Email: sales@sekers.co.uk **Export Email:** export@sekers.co.uk
 Website: www.sekersfabrics.co.uk





08 TEAL (FACE)



08 NAVY (REVERSE)



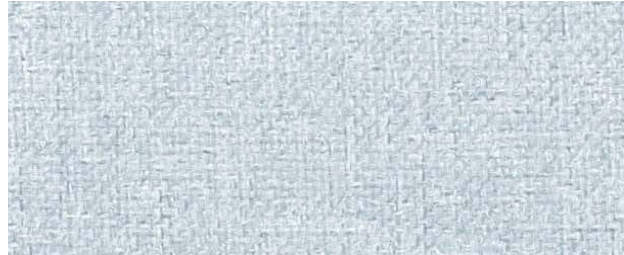
11 YELLOW (FACE)



11 ORANGE (REVERSE)



09 DUCK EGG (FACE)



09 SKY BLUE (REVERSE)



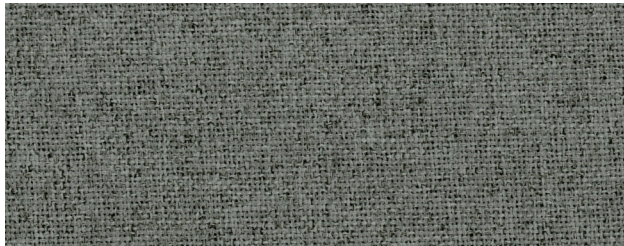
05 SAND (FACE)



05 WALNUT (REVERSE)



07 CHARCOAL (FACE)



07 STEEL (REVERSE)



04 CREAM (FACE)



04 TAUPE (REVERSE)



06 BARK (FACE)



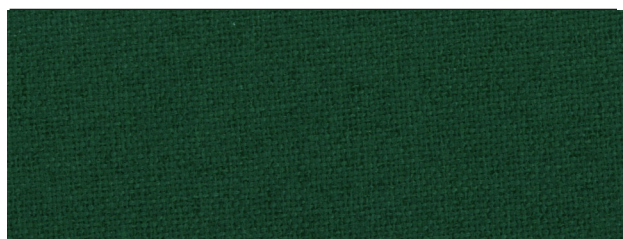
06 MOSS (REVERSE)



03 SILVER (FACE)



03 LIGHT BEIGE (REVERSE)



10 EMERALD (FACE)



10 SAGE (REVERSE)



01 CHALK



02 PORCELAIN

*01 CHALK & 02 PORCELAIN ARE THE SAME COLOUR FACE AND REVERSE