

# ZOFFANY

SUFFOLK DAMASKS & STRIPES



DIGITAL DESIGN BOOK

# ZOFFANY

## SUFFOLK DAMASKS & STRIPES

FROM THE WEAVERS OF 18TH CENTURY LONDON TO A HERITAGE SUFFOLK MILL, ZOFFANY REVEALS SUFFOLK DAMASKS & STRIPES, A COLLECTION OF FABRICS INSPIRED BY ARCHIVAL DESIGNS AND LAYERED IN TRADITIONAL TECHNIQUES, FOR SS24.

The divine history of silk weaving in England pivoted in the 17th century, when Huguenots, the French weavers, resettled throughout Europe, finding home in Spitalfields, which went on to become synonymous with the silk weaving industry. Later, the tradition for jacquards moved out to Suffolk, where its popularity soared.

These mills, having for decades weaved in the purist tradition and technique, have done so in a whisper, quietly producing fine quality fabrics. Suffolk Damasks & Stripes is a collection of fabrics inspired by archival designs, woven in one of the last remaining silk mills and dye houses in England, using original techniques of production and woven in 100% natural fibres, including silk, linen and cotton. This collection of damasks and stripes is a meeting of design minds, retaining the integrity of the artisanal and archival in exemplary new fabrics for contemporary interiors.

"Ultimately, there is a simplicity to Damasks, a timelessness that reflects a purity of the design. These Damasks have come together from a sharing of Zoffany's and the mill's extensive knowledge of design and making of these fabrics. The colour, yarn, heritage and skill are all of equal importance and significance in the process." – Peter Gomez, Lead Designer, Zoffany.

The mill is driven by the beauty of the bespoke, so much so that colours can be custom created too. Combining the mill's archive with Zoffany's own ink box, a new palette was mixed for this collection that feels wholly useable, committed to the origin of Damasks but elevated from the everyday, with contemporary hues in the mix.

These colours are underscored by the textural and visual character of the fabrics themselves. Each fabric is real, authentic and meticulously selected to pair colour and design, lending an honesty to the collection – wool feels like wool, linen feels like linen, silk feels like silk. As it should be.

Untampered by processes that detract from its natural beauty and texture, revealing truly exceptional fabrics.





## POMEGRANATE BROCATELLE

A silk-rich fabric, heavy in a brocade design, Pomegranate Brocatelle is a smaller, attainable scale for interiors, produced in silk and linen. Discovered at Temple Newsam as a flock wallpaper from the mid-18th century, it has been reincarnated with a handsome structure for exquisite results.



333381



333382



333383



333384

## ARABESQUE SILK

A French 18th century silk woven damask, Arabesque Silk is one of the more classic damask qualities in the collection.

A scrolling design featuring a flowing floral decoration, Arabesque Silk reminisces in the finer details of classic damask patterns. A silk lustre pervades this fabric, which is a silk and cotton blend, highlighted by the soft scrolling edge of the weave, reflecting light and shade.



333385



333386



333387



333388





## CLANDON DAMASK

Clandon is the epitome of a grand damask. An impressive, large-scale design in silk cotton, Clandon engulfs a room with its proportion and magnificent flowering flock. Zoffany's archive document dates back to the late 15th/early 16th century, when this design was originally produced in silk on a narrow loom and featured as a block printed flock wallpaper at Clandon Park House in 1735, hence its regal name. This damask has appeared in many guises in our archive, each generation adding its own take on the design.



333378



333379



333380



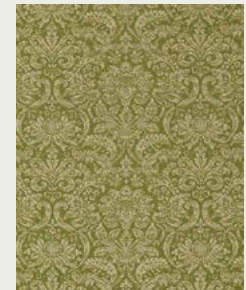
## KNOLE DAMASK

Inspired by an English, early 18th century design, Knole Damask, so named after the vast estate in Kent, is crafted in cotton and linen and inspired by a stamped wall damask found in the King's Closet.

Intricate and small in scale, this two-headed damask is an all over design woven on an end-to-end warp with two colours, creating an ottoman ground. Linen runs through the weft of the design for a sublimely textural fabric that has a heritage feel to the grain.



333392



333393



333394



333395

## LONG GALLERY

With its origins dating back to mid-18th century at Temple Newsam, Long Gallery has been reborn in an abundant wool and cotton fabric, suitable for occasional domestic use.

This woven, multicoloured jacquard mixes yarns, inspired by tapestry techniques to produce something altogether more unexpected, yet rooted in its design history.



333389



333390



333391



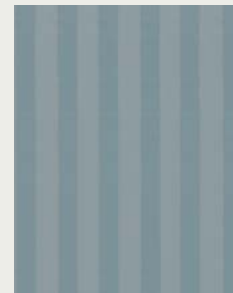


## SUFFOLK STRIPE

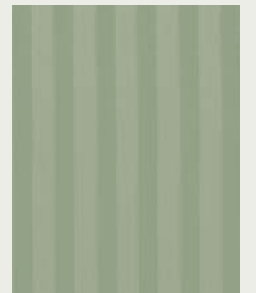
Woven in 100% cotton, Suffolk Stripe is an elegant and delicate fabric in a Regency stripe. A thoughtful and considered backdrop to a well-designed home, Suffolk Stripe is produced in six colourways. The stripe is accentuated with an ottoman texture contrasting the flat, which is created on an end-to-end warp for the most exemplary finish.



333396



333397



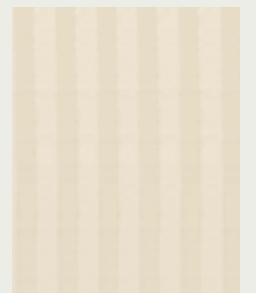
333398



333399



333400



333401



# SUFFOLK DAMASKS AND STRIPES INDEX



Arabesque Silk 333385



Arabesque Silk 333386



Arabesque Silk 333387



Arabesque Silk 333388



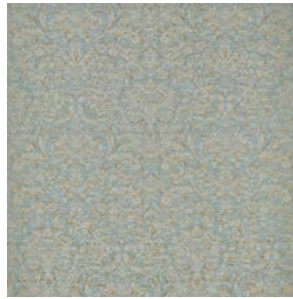
Clandon Damask 333378



Clandon Damask 333379



Clandon Damask 333380



Knole Damask 333392



Knole Damask 333393



Knole Damask 333394



Knole Damask 333395



Long Gallery Brocade 333389



Long Gallery Brocade 333390



Long Gallery Brocade 333391



Pomegranate Brocatelle 333381



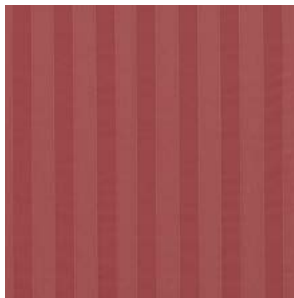
Pomegranate Brocatelle 333382



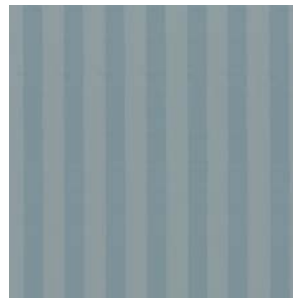
Pomegranate Brocatelle 333383



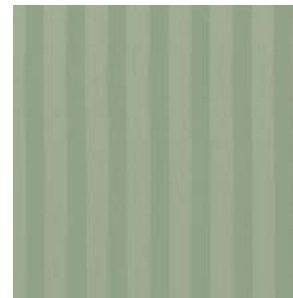
Pomegranate Brocatelle 333384



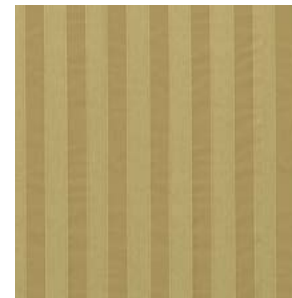
Suffolk Stripe 333396



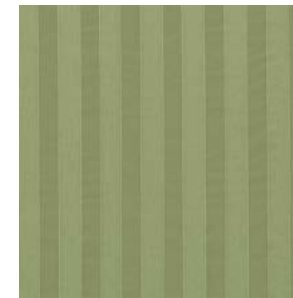
Suffolk Stripe 333397



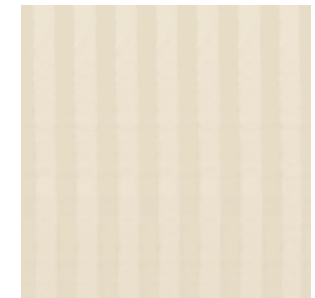
Suffolk Stripe 333398



Suffolk Stripe 333399



Suffolk Stripe 333400



Suffolk Stripe 333401

# ZOFFANY

## CONTACT DETAILS

### LONDON SHOWROOM

Design Centre Chelsea Harbour, First Floor, South Dome, Lots Road, London, SW10 0XE  
Tel: + 44 203 903 3700 | Email: [showroom@sandersondesigngroup.com](mailto:showroom@sandersondesigngroup.com)

### PARIS SHOWROOM

19 Rue du Mail 75002 Paris, France  
Tel: +44 (0)203 093 1840

### NEW YORK SHOWROOM

D&D Building, 979 3rd Avenue, Suite 905, New York, NY 10022  
Tel: +1 212 319 7220 | Email: [sales-ny@sandersondesigngroup.com](mailto:sales-ny@sandersondesigngroup.com)

### CHICAGO SHOWROOM

222 Merchandise Mart Plaza, Suite 6-117A, Chicago, IL 60654  
Tel: +1 312 929 2058 | Email: [sales-chicago@sandersondesigngroup.com](mailto:sales-chicago@sandersondesigngroup.com)

### NETHERLANDS SHOWROOM

ETC Licht & Interieur, Randweg 20, 4104 AC Culemborg  
Tel: +31 65349 3696 | Email: [international@sandersondesigngroup.com](mailto:international@sandersondesigngroup.com)

### GERMANY SHOWROOM

Kronenstrasse 4, 76133 Karlsruhe  
Tel: +49 721 981 985 60 | Email: [verkauf@sandersondesigngroup.com](mailto:verkauf@sandersondesigngroup.com)