

Humanscale

Trea

Designed by Todd Bracher



## Trea

From office to living room to everywhere in-between, multipurpose chairs are the new standard for work. However, with flexible aesthetics prioritised, ergonomic comfort – along with health – has been lost. Trea is a modern chair designed to bridge this gap and restore wellness, wherever work happens.



## Solid State Mechanism

Trea leads with function and versatility without sacrificing advanced ergonomic comfort. Its 12° supported recline feels as effortless as it is generous, powered by a Solid State mechanism, no dials or knobs required.



# One size fits all. Instantly.

Made to fit 95%  
of all body types

360° swivel

Greaseless, swivel and  
height-adjustable pneumatic  
cylinder accommodates various  
seat/surface heights.



Trea Cantilever Base, White



## Customisation

Our textiles are carefully selected to enhance the ergonomic function and Planet Positive sustainability of our designs. Featuring a broad spectrum of colors, patterns, and textures, all are rigorously tested to ensure they perform as well after ten years as they do on day one. Likewise, Trea's base, frame, casters, and optional seat pad can all be customised for a diverse range of settings, with each component tested far beyond industry standards.

“The Trea chair can be outfitted with an optional seat pad, adding a touch of color and customisation to any space.”

— Todd Bracher



## Design by Todd Bracher

Todd Bracher is an industrial designer and design strategist, working at the intersection of design, science, and business with a commitment to solutions for matters of global concern. Todd has been honored as a Top 100 Global Design Influencer by Wallpaper\* Magazine, two-time International Designer of the Year, and with numerous RedDot's Best of the Best and NeoCon Gold Awards for product design.

His work speaks a clear, unambiguous language that is guided first and foremost by function. This leads him to unexpectedly elegant solutions to contemporary problems and addresses the volatile proximity of life and work in new and pleasing forms.

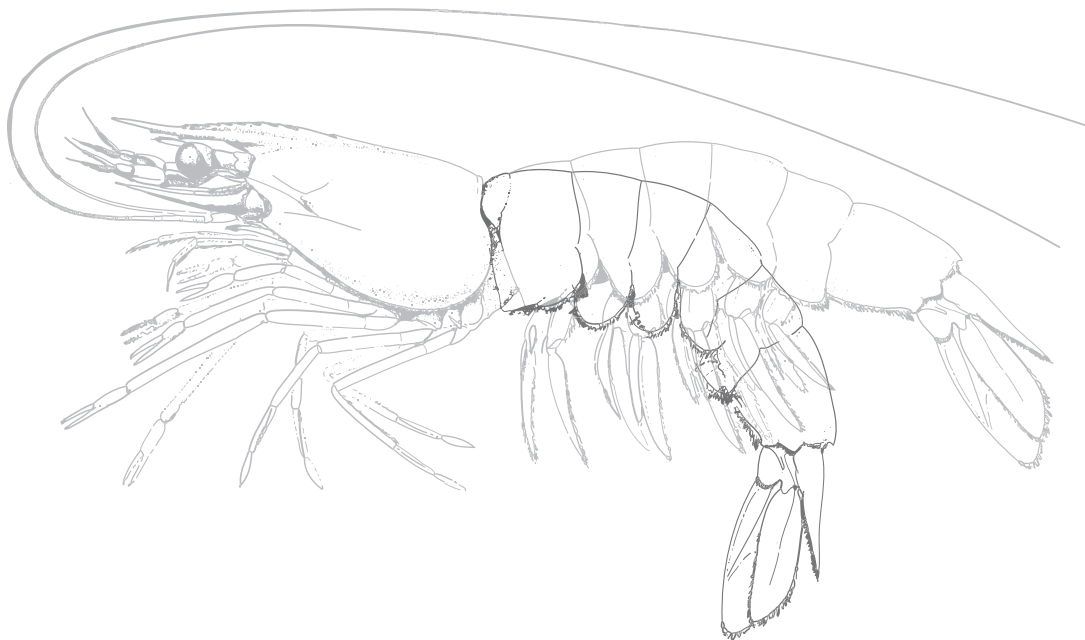
As with all Bracher designs, Trea Lite Task is function-first, and carries a clean, timeless aesthetic. The chair offers intuitive comfort by mimicking the human body's instinctive recline and embracing the sitter in a supportive shell.





## Inspired by Nature

Designed by Todd Bracher, Trea is a simple, yet high performance task chair inspired by nature. Its minimalist form behaves like a living shell, gently articulating against the body's pivot points while moving in harmony with its user and allowing for full freedom of movement.



## Ergonomics in Any Environment

Ideally suited to a wide range of work environments, Trea brings new lightweight language to high-function design. Its clean, minimalist aesthetic elevates any setting without pulling focus, while the powerful, ergonomic mechanics as its core are instantly felt but never seen.



Trea Four Leg, Remix 0906



Trea Lite Task, Steelcut Quartet 0534 and 0684



Trea Lite Task, Vanir 0913

**Minimalist design lends true versatility without sacrificing comfort, style, or first-class functionality.**



Trea Lite Task Stool, Arda 0201

## Sustainability

At Humanscale, our approach to product development and manufacturing embodies our mission to minimise our impacts. We believe that the best design in the world achieve more with less, so we act accordingly. Trea is no different, made with fewer parts than the standard task chair, and thus reducing its climate footprint.

Like all Humanscale products, Trea is free of Red-List chemicals, which is not only better for the planet, but for the user as well, making it safe to use in any environment. It is also certified climate positive, as well as certified Indoor Advantage™ Gold and BIFMA LEVEL® 3.

## Warranty

Trea comes with an industry-leading 15 year\* warranty. Made from highly durable materials, Trea is designed to last, staying in use and out of landfills. A non-erodible metal spring powers its recline and work as well after a decade as it does on day one.

\*15 Years, Components and Parts | 5 Years, Fabric and Cushions

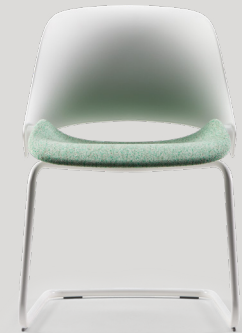
# Trea

Statement of Line



**Lite Task**  
T400

**Lite Task Stool**  
T500



**4-Leg**  
T100

**Cantilever**  
T200

**4-Star**  
T300

## Casters

- Hard
- Soft
- Hard Braking
- Soft Braking

## Base

- White
- Polished Aluminium

## Seat Pad

- Upholstered
- Plastic



Humanscale is the global leader in high-performance ergonomic products that improve the health and comfort of work life. From chairs to height-adjustable desks to lighting and computer support products, Humanscale transforms office necessities into minimally elegant ergonomic solutions that encourage movement wherever work happens. With 29 products certified climate-positive by the International Living Future Institute, Humanscale is committed to making a planet-positive impact on the earth as well as our customers.



For more information, please visit [Humanscale.com](https://www.humanscale.com).  
© 2024 Humanscale. All Rights Reserved.

Humanscale